

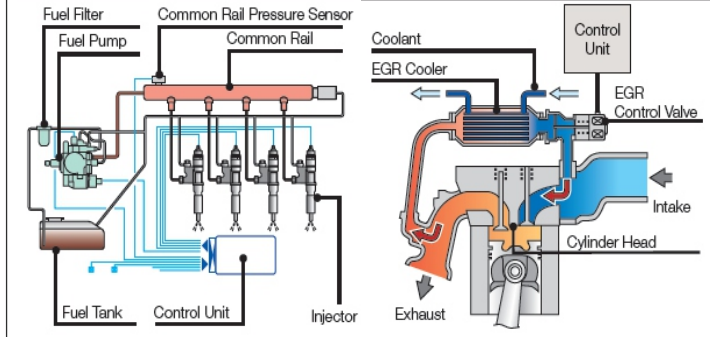
# CF 8





# High Performances with Less Fuel Consumption

The new performant hydraulic plants give more power to increase the productivity. The LOAD SENSING VALVE permits to feed the movements which are activated, adapting instantly to the oil flow, allowing a consumption reduction. The oil and filters change intervals have been extended, reducing maintenance time and expenses. The engine control unit drives the fuel pump at an ultrahigh pressure to inject the fuel into the cylinders through a common rail device. The cooler EGR system mixes exhaust gasses with intake air for a re-combustion, lowering combustion temperature and reducing fuel consumption. The new engines comply with the US norms TIER 4 and the EU Euro 4.



# Worldwide Service

Our technical support service provides quick access to factory expertise, while our commercial team is always on hand to provide fast and competitive quotes. Our service network covers over 25 countries all over the world.



# Easy Maintenance

Routine maintenance is essential for keeping unscheduled downtime to an absolute minimum and ensuring the overall reliability of your machine, but it can be difficult finding the time to carry out regular checks on busy construction sites. The new bases has been designed with time-saving, conveniently accessible features that will make it easy for you to perform routine service and cleaning procedures, so you can get the machine back to work as quickly as possible.



# Comfortably in control

The new cabs provided with air conditioning, radio-CD player, multifunction LCD monitor and an absorbing and eating seat, guarantee a comfortable position and ensures an excellent view of the working area. Through the multifunction monitor (optional) the operator can check all the machine parameters and can start the rear view by a camera. The cabs are also protected by new system Center Pillar Reinforced Structure. Our machines are provided with an electronic device which measures the drilling depth and can be equipped also with the mast automatic alignment device which improves the verticality of the pile.





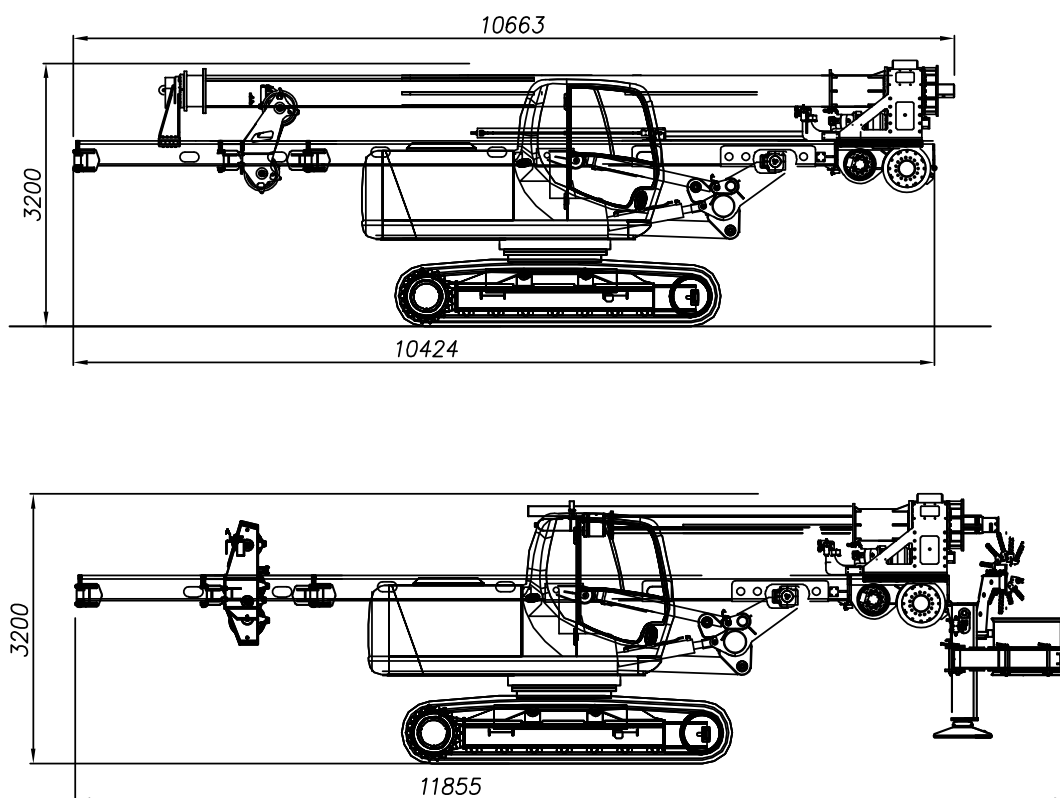


<b>Carro Base</b>		<b>Base Carrier</b>				
Tipo	Type	Case CX160D				
Motore diesel	Diesel engine	Isuzu AR-4JJ1X				
Normativa emissioni	Exhaust emission standard	EU Stage IV - US EPA Tier4 Final				
Potenza a 2200 rpm	Rated power @ 2200 rpm	86	kW	115	HP	
Capacità serbatoio carburante	Fuel tank capacity	300	l	79	gal	
Capacità serbatoio AdBlue	AdBlue tank capacity	85	l	22	gal	
Livello di pressione sonora in cabina	Sound pressure level in cabin	69 dB(A)				
Livello di potenza sonora	Sound power level	100 dB(A)				
<b>Impianto idraulico</b>		<b>Hydraulic System</b>				
Portata pompe principali	Main pumps flow rate	2 x 142	l/min	1 x 37,4	gpm	
Portata pompa secondaria	Auxiliary pump flow rate	22	l/min	5,8	gpm	
Pressione di lavoro	Working hydraulic pressure	280	bar	4351	psi	
Massima pressione	Max hydraulic pressure	320	bar	4930	psi	
Capacità serbatoio olio idraulico	Hydraulic oil tank capacity	167	l	44,2	gal	
<b>Sottocarro</b>		<b>Undercarriage</b>				
Carreggiata	Overall tracks width	2490	mm	97,1	in	
Lunghezza	Overall tracks length	3990	mm	155,6	in	
Larghezza pattini a tre barre	Width of triple grouser track shoes	500	mm	19,5	in	
Velocità di traslazione	Travel speed	5,4	Km/h	3,4	mph	
Forza di trazione	Traction force	160	kN	35968	lbs	
<b>Rotary idraulica</b>		<b>Hydraulic rotary head</b>				
Coppia max nominale	Max nominal torque	80	kNm	59005	ft lbs	
Velocità max di perforazione	Max drilling speed	30 rpm				
Velocità di scarico	Spin-off speed	60 rpm				
<b>Argano Principale</b>		<b>Main winch</b>				
Tiro sul 1° strato	Line pull on 1st layer	100	kN	22480	lbs	
Velocità max	Max line speed	50	m/min	164	ft/min	
Diametro della fune	Rope diameter	20	mm	0,78	in	
<b>Argano Ausiliario</b>		<b>Auxiliary winch</b>				
Tiro sul 1° strato	Line pull on 1st layer	35	kN	7868	lbs	
Velocità max	Max line speed	95	m/min	311	ft/min	
Diametro della fune	Rope diameter	14	mm	0,55	in	
<b>Martinetto Pull Down</b>		<b>Crowd Ram System</b>				
Forza di estrazione	Extraction force	150	kN	33721	lbs	
Forza di spinta	Crowd force	120	kN	26976	lbs	
Corsa	Stroke	2000	mm	79	in	
<b>Motoriduttore a catena</b>		<b>Crowd Chain-Motor System</b>				
Forza di estrazione/spinta	Extraction/crowd force	150	kN	33721	lbs	
Corsa	Stroke	9000	mm	354	in	
<b>Pali</b>		<b>Kelly bar bored piling</b>				
Diametro min	Min diameter	350	mm	13,8	in	
Diametro max fronte mast	Max diameter along mast	1500	mm	59,1	in	
Diametro max sotto mast	Max diameter below mast	2000	mm	78,7	in	
Diametro max con tubi forma	Max diameter with casing pipes	1000	mm	39,4	in	
Profondità max	Max depth	35	m	114,8	ft	
<b>Pali ad altezza limitata</b>		<b>Low Headroom bored piling</b>				
Altezza di lavoro con supporto alto	Working height with mast support up	9530	mm	31,2	ft	
Altezza di lavoro con supporto basso	Working height with mast support do	7840	mm	25,7	ft	
Profondità max	Max depth	16	m	52,5	ft	
<b>Pali ad altezza super limitata</b>		<b>Super Low Headroom bored piling</b>				
Altezza di lavoro con supporto alto	Working height with mast support up	7400	mm	24,2	ft	
Altezza di lavoro con supporto basso	Working height with mast support do	5700	mm	18,7	ft	
Profondità max	Max depth	13	m	42,6	ft	



<b>Pali CFA</b>		<b>CFA bored piling</b>				
Diametro min	Min diameter	300	mm	11,8	in	
Diametro max	Max diameter	800	mm	31,5	in	
Profondità max	Max depth	10	m	32,8	ft	
Profondità max con prolunga di 3m	Max depth with 3m auger extension	13	m	42,6	ft	
Forza di estrazione con tiro in II	Extraction force on 2nd layer pull	200	kN	44961	lbs	
<b>Pali CFA - allungata</b>		<b>CFA bored piling - extended</b>				
Diametro min	Min diameter	300	mm	11,8	in	
Diametro max	Max diameter	800	mm	31,5	in	
Profondità max	Max depth	13	m	42,6	ft	
Profondità max con prolunga di 4m	Max depth with 4m auger extension	17	m	55,8	ft	
Forza di estrazione con tiro in III	Extraction force on 3rd layer pull	300	kN	66442	lbs	
<b>Dimensioni per il trasporto</b>		<b>Transport dimensions</b>				
Lunghezza in versione Kelly Bar	Length in Kelly Bar mode	10663	mm	34,9	ft	
Lunghezza in versione CFA	Length in CFA mode	11855	mm	38,9	ft	
Altezza	Height	3200	mm	10,5	ft	
Larghezza	Width	2490	mm	8,0	ft	
Peso (con Kelly Bar da 35m)	Weight (with 35m kelly bar)	25000	kg	55115	lbs	
Peso (in versione CFA da 13m)	Weight (in CFA mode for 13m)	21500	kg	47400	lbs	

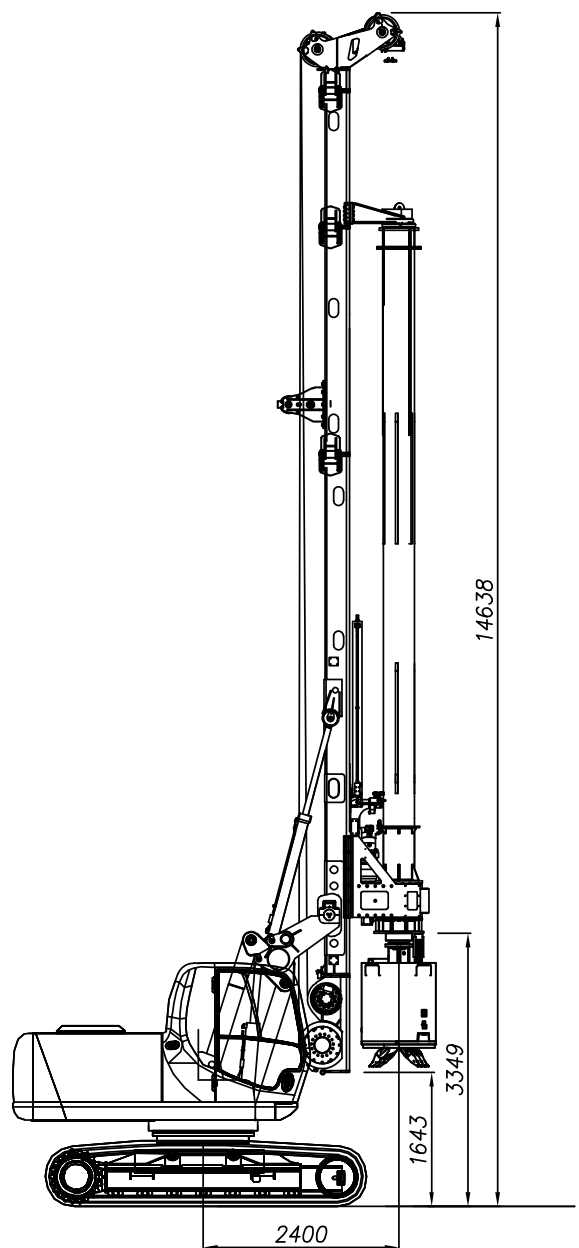
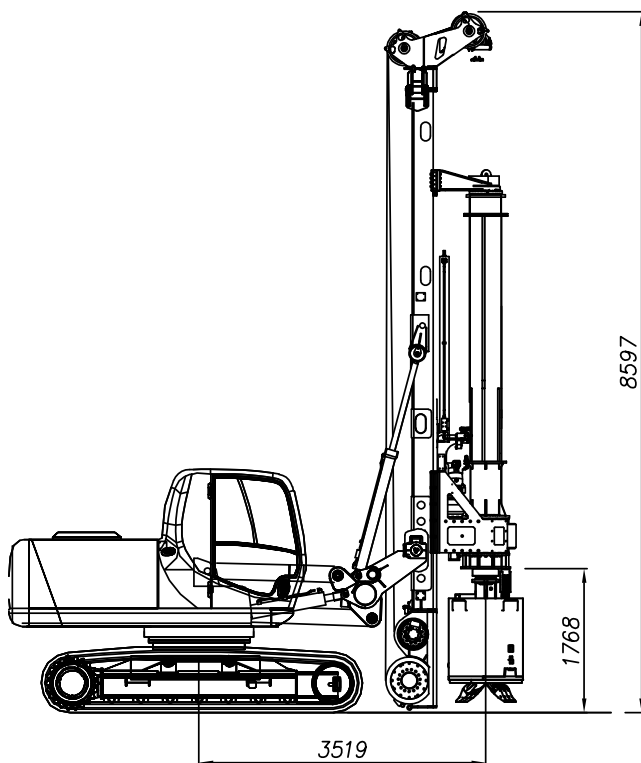
## Configurazione trasporto / Transport configuration

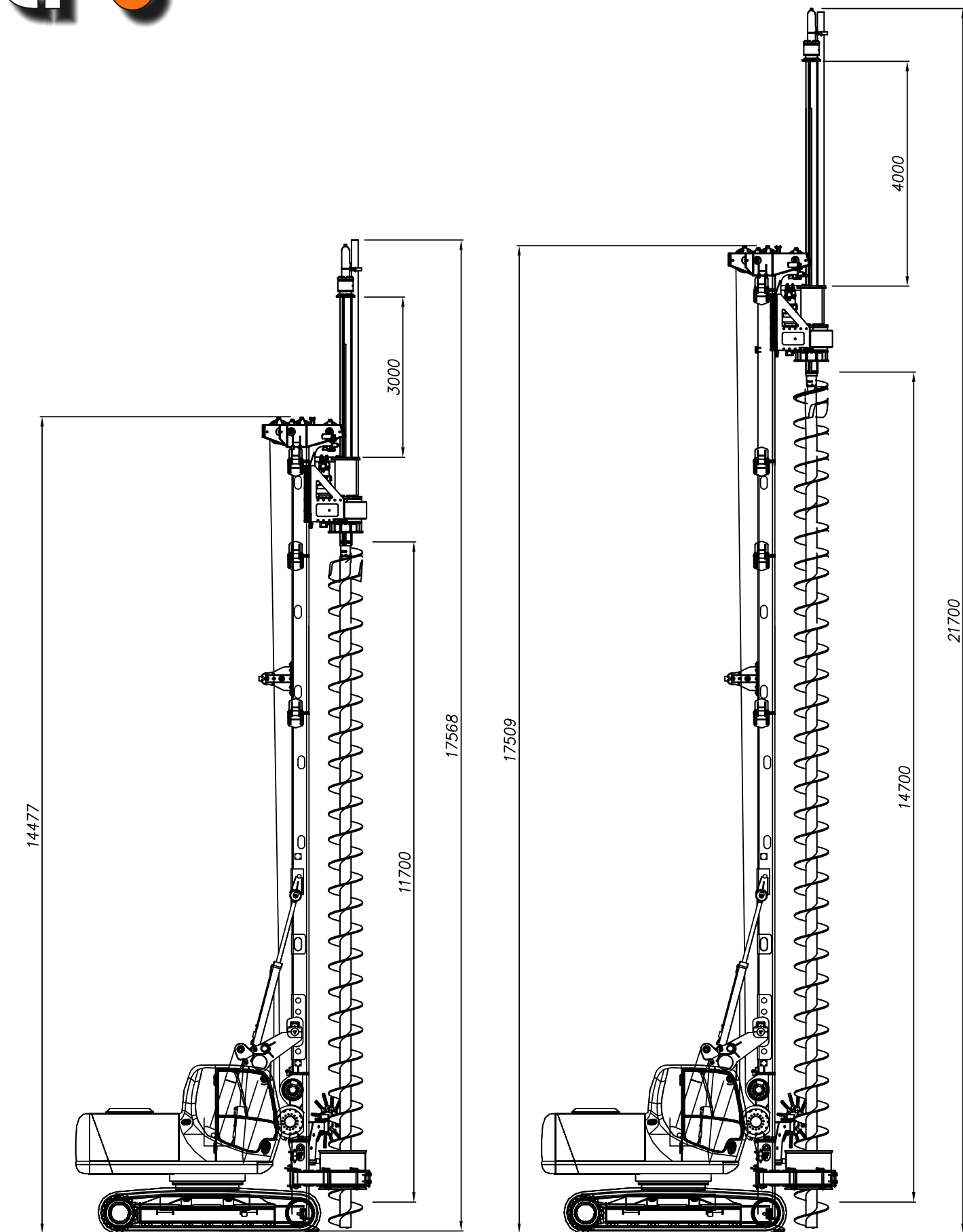


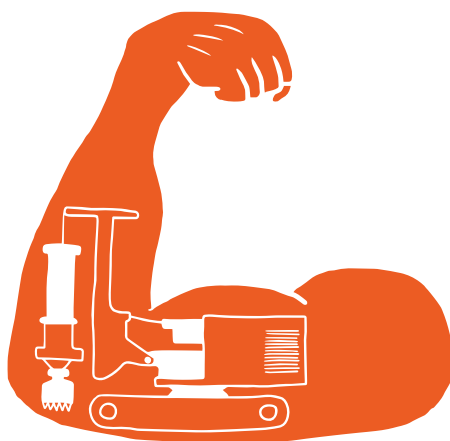
## Aste a bloccaggio

Mechanical locking kelly bar

Elementi	Ø <sub>e</sub> 1° tubo		Lunghezza (A)		Profondità		Altezza (H)	
Elements	Ø <sub>e</sub> 1st tube		Length (A)		Depth		Height (H)	
	(mm)	(ft)	(mm)	(ft)	(m)	(ft)	(mm)	(ft)
5	323	1,06	8200	27,8	35	115	2208	7,2
5	323	1,06	7300	24,2	30	98,46	2576	8,4
5	323	1,06	6880	22,6	28	91,9	3026	9,9
5	323	1,06	6000	19,7	24	78,7	3906	12,8
5	323	1,06	4623	15,1	18	59	4761	15,6
5	323	1,06	3852	12,6	15	49,2	5436	17,8







TES CAR® is a brand licensed to TONTI TRADING SRL

TONTI TRADING SRL:



[info@tontitrading.com](mailto:info@tontitrading.com)



+39 071 9300027

P.Iva / VAT: IT 02636680429

Registered Office: Via Marco Polo, 80 60027 Osimo (AN) Italy  
Operating Office: Via Flaminia II, 16 60027 Osimo (AN) Italy